



120 Series Refrigeration Systems

Water Cooled Condensing Units

Hermetic / Scroll / Semi-Hermetic

½ Thru 6 Hp Models

Kolpak PC Water Cooled Refrigeration Systems

The Kolpak PC Water Cooled Refrigeration system includes an Kolpak water cooled condensing unit, an evaporator assembly and is supplied charged with refrigerant sufficient for a 50' line run. The condensing unit assembly is designed to be remotely located. Installation involves securing the evaporator assembly on the interior of the walk-in, locating the condensing unit in a suitable area near the walk-in, and installing refrigerant lines between the condensing unit assembly and the evaporator assembly, evacuating the evaporator assembly and refrigerant lines and opening the base valves provided on the condensing unit assembly. An electrician must bring power to both the condensing unit assembly and the evaporator assembly and a plumber must bring an adequate supply of water to the condensing unit. On low temperature systems the time clock is shipped loose and is to be field installed in a convenient location outside of the walk-in.

PC Water Cooled System consists of:

- Water Cooled Condensing Unit (high side assembly) ETL or UL Listed to UL Standard 1995
- Evaporators (low side assembly) *See Kolpak Unit Cooler catalog for details of evaporators assemblies*
- All necessary controls for proper operation of condensing unit and evaporators
- Time Clock (low temp) shipped loose
- Refrigerant charge (high side assembly) suitable for up to 50 feet of line run

Standard Installed Components:

Kolpak High Side Assembly:

- Liquid Line Filter/Drier
- Sight glass/Moisture Indicator
- Pressure Controls
- Low Ambient Controls (outdoor)
- Crankcase Heater (outdoor)
- Oversized Receiver
- Refrigerant Charge for up to 50' of lines
- Insulated Suction Line
- PSC Condenser Fan Motors
- Base Valves
- Water Balancing Valve
- Time Clock (low temp) *shipped loose*

Kolpak Low Side Assembly:

- Thermostatic Expansion Valve
- Solenoid Valve
- Temperature Control
- EC Fan Motors
- (See Unit Cooler catalog for details)

Kolpak PR Water Cooled Refrigeration Systems

The Kolpak PR Water Cooled Refrigeration system includes an Kolpak water cooled condensing unit, an evaporator assembly and is supplied with a dry nitrogen holding charge. The condensing unit assembly is designed to be remotely located. Installation involves securing the evaporator assembly on the interior of the walk-in, locating the condensing unit in a suitable area near the walk-in, and installing refrigerant lines between the condensing unit assembly and the evaporator assembly, evacuating the condensing unit, evaporator assembly and refrigerant lines and providing a suitable refrigerant charge for the system. Once the system reaches the correct temperature and has stabilized the refrigeration installer should set the evaporator superheat for maximum efficiency. An electrician must bring power to both the condensing unit assembly and the evaporator assembly and a plumber should supply water to the condensing unit. On low temperature systems the time clock is shipped loose and is to be field installed in a convenient location outside of the walk-in.

PR Water Cooled System consists of:

- Condensing Unit (high side assembly) ETL or UL Listed to UL Standard 1995
- Evaporators (low side assembly) *See Kolpak Unit Cooler catalog for details of evaporators assemblies*
- All necessary controls for proper operation of condensing unit and evaporators
- Time Clock (low temp) shipped loose

Standard Installed Components:

Kolpak High Side Assembly:

- Liquid Line Filter/Drier
- Sight glass/Moisture Indicator
- Pressure Controls
- Low Ambient Controls (outdoor)
- Crankcase Heater (outdoor)
- Oversized Receiver
- Dry Nitrogen holding charge
- Insulated Suction Line
- PSC Condenser Fan Motors
- Base Valves
- Water Balancing Valve
- Time Clock (low temp) *shipped loose*

Kolpak Low Side Assembly:

- Thermostatic Expansion Valve
- Solenoid Valve
- Temperature Control
- EC Fan Motors
- (See Unit Cooler catalog for details)

Features and Options

Controls	PC			PR		
	Hermetic	Scroll	Semi-Hermetic	Hermetic	Scroll	Semi-Hermetic
Encapsulated High Pressure Control	Std	Std	Std	Std	Std	Std
Encapsulated Low Pressure Control	Std	Std	Std	Std	Std	Std
Adjustable Low Pressure Control	Opt	Opt	Opt	Opt	Opt	Opt
Crank Case Heater (low ambient)	Std	Std	Std	Std	Std	Std
Condenser	Hermetic	Scroll	Semi-Hermetic	Hermetic	Scroll	Semi-Hermetic
Condenser	Std	Std	Std	Std	Std	Std
Water Balancing Valve	Std	Std	Std	Std	Std	Std
Receiver & Piping Components	Hermetic	Scroll	Semi-Hermetic	Hermetic	Scroll	Semi-Hermetic
Oversized Receiver	Std	Std	Std	Std	Std	Std
Receiver shut off valve	Std	Std	Std	Std	Std	Std
Base valves liquid & suction	Std	Std	Std	Std	Std	Std
Suction line vibrasorber	Opt	Opt	Std	Opt	Opt	Std
Discharge line vibrasorber	Opt	Opt	Std	Opt	Opt	Std
Liquid and Suction line piping stub outs	Std	Std	Std	Std	Std	Std
Liquid and Suction line quick connects	NA	NA	NA	NA	NA	NA
Condenser to Evaporator Line Sets 10'	NA	NA	NA	NA	NA	NA
Condenser to Evaporator Line Sets 10', 30', & 40'	NA	NA	NA	NA	NA	NA
Suction accumulator	Opt	Opt	Opt	Opt	Opt	Opt
Suction filter	Opt	Opt	Opt	Opt	Opt	Opt
Liquid Line Drier	Std	Std	Std	Std	Std	Std
Liquid Line Moisture indicator sight glass	Std	Std	Std	Std	Std	Std
Defrost	Hermetic	Scroll	Semi-Hermetic	Hermetic	Scroll	Semi-Hermetic
Defrost Lock Out	Opt	Opt	Opt	Opt	Opt	Opt
Time Clock (medium temp)	Opt	Opt	Opt	Opt	Opt	Opt
Time Clock (Low temp)	Std	Std	Std	Std	Std	Std
Refrigerant	Hermetic	Scroll	Semi-Hermetic	Hermetic	Scroll	Semi-Hermetic
Refrigerant Charge	Std	Std	Std	NA	NA	NA
Dry Nitrogen Holding Charge	NA	NA	NA	Std	Std	Std
Housing	Hermetic	Scroll	Semi-Hermetic	Hermetic	Scroll	Semi-Hermetic
Electrical Control Panel with cover	Std	Std	Std	Std	Std	Std
Testing	Hermetic	Scroll	Semi-Hermetic	Hermetic	Scroll	Semi-Hermetic
Leak Testing prior to shipment	Std	Std	Std	Std	Std	Std
Dielectric Testing	Std	Std	Std	Std	Std	Std
Agency Listing to UL & CUL Standard 1995	Std	Std	Std	Std	Std	Std
Liquid Line Moisture indicator sight glass	Std	Std	Std	Std	Std	Std

Nomenclature

PC - 149 M W OP - 2

W - Water Cooled
if a Z follows Scroll
if no letter in this
position either
hermetic or
semi-hermetic

M - Medium Temperature
L - Low Temperature

OP - Outdoor
PD - Indoor

Hermetic or Scroll

049 - 1/2 Hp
069 - 3/4 Hp
099 - 1 Hp
149 - 1-1/2 Hp
199 - 2 Hp
249 - 2-1/2 Hp
299 - 3 Hp
349 - 3-1/2 Hp
399 - 4 Hp
499 - 5 Hp

Semi-Hermetic

074 - 3/4 Hp
104 - 1 Hp
154 - 1-1/2 Hp
204 - 2 Hp
304 - 3 Hp
344 - 3-1/2 Hp
444 - 4-1/2 Hp
644 - 6 Hp

1 - 115/60/1
2 - 208/230-60-1
3 - 208/230-6-3
4 - 460/60-1

Kolpak Models

PC (Pre-Charged no lines)
PR (Pre-Assembled Remote)

Note: If "D" is added as prefix to model it designates Duo-Pak. Example DPR-149L/69MOP

Hermetic Low Temp (Water Cooled) Condensing Units

Model	Comp Model	Electrical Data											Physical Dimensions w/Housing				
		Amps @115/60/1						Amps @208-230/60/1					Length	Width	Height	Ship Wt. LBS.	
		Compressor		+ HCF Amps	Total CU	MCA	MOPD	Compressor		+ HCF Amps	Total CU	MCA					MOPD
RLA	LRA					RLA	LRA										
69LW	RS64C2E	15.2	59.0	0.4	15.6	19.7	30.0	9.2	45.0	0.3	9.5	12.1	20.0	33	25-1/2	13 1/4	100
99LW	CF04K6E	—	—	—	—	—	—	9.6	59.2	0.3	9.9	12.6	20.0	33	25-1/2	16 3/4	180
149LW	CF06K6E	—	—	—	—	—	—	11.4	59.2	0.3	11.7	14.8	25.0	33	25-1/2	16 3/4	185
199LW	CF09K6E	—	—	—	—	—	—	16.7	87.0	0.3	17.0	21.4	35.0	33	25-1/2	22 3/4	200
299LW	CF12K6E	—	—	—	—	—	—	20.5	105.0	0.3	20.8	26.2	45.0	33	25-1/2	22 3/4	200

Model	Comp Model	Electrical Data											Physical Dimensions w/Housing				
		Amps @208-230/60/3						Amps @460/60/3					Length	Width	Height	Ship Wt. LBS.	
		Compressor		+ HCF Amps	Total CU	MCA	MOPD	Compressor		Cond FLA	Total CU	MCA					MOPD
RLA	LRA					RLA	LRA										
69LW	RS64C2E	—	—	—	—	—	—	—	—	—	—	—	—	33	25-1/2	13 1/4	100
99LW	CF04K6E	6.8	52.0	0.3	7.1	8.6	15.0	—	—	—	—	—	—	33	25-1/2	16 3/4	180
149LW	CF06K6E	7.0	52.0	0.3	7.3	9.3	15.0	—	—	—	—	—	—	33	25-1/2	16 3/4	185
199LW	CF09K6E	10.2	72.2	0.3	10.5	13.3	20.0	—	—	—	—	—	—	33	25-1/2	22 3/4	200
299LW	CF12K6E	12.3	85.0	0.3	12.6	15.9	25.0	—	—	—	—	—	—	33	25-1/2	22 3/4	200

Scroll Low Temp (Water Cooled) Condensing Units

Model	Comp Model	Electrical Data											Physical Dimensions w/Housing				
		Amps @115/60/1						Amps @208-230/60/1					Length	Width	Height	Ship Wt. LBS.	
		Compressor		+ HCF Amps	Total CU	MCA	MOPD	Compressor		+ HCF Amps	Total CU	MCA					MOPD
RLA	LRA					RLA	LRA										
299LWZ	ZF09K4E	—	—	—	—	—	—	14.7	88	—	14.7	18	30	29	25	28	200
349LWZ	ZF11K4E	—	—	—	—	—	—	18.6	109	—	18.6	23	40	27	22	28	215
449LWZ	ZF13K4E	—	—	—	—	—	—	24.0	129	—	24.0	30	50	27	22	28	215
549LWZ	ZF15K4E	—	—	—	—	—	—	28.8	169	—	28.8	36	60	29	25	28	225
599LWZ	ZF18K4E	—	—	—	—	—	—	—	—	—	—	—	—	29	25	28	230

Model	Comp Model	Electrical Data											Physical Dimensions w/Housing				
		Amps @208-230/60/3						Amps @460/60/3					Length	Width	Height	Ship Wt. LBS.	
		Compressor		+ HCF Amps	Total CU	MCA	MOPD	Compressor		Cond FLA	Total CU	MCA					MOPD
RLA	LRA					RLA	LRA										
299LWZ	ZF09K4E	9.9	77	—	9.9	15	20	5.1	39	—	5.1	15	15	29	25	28	200
349LWZ	ZF11K4E	12.2	88	—	12.2	15	25	6.4	44	—	6.4	15	15	27	22	28	215
449LWZ	ZF13K4E	13.5	99	—	13.5	17	30	7.4	49.5	—	7.4	15	15	27	22	28	215
549LWZ	ZF15K4E	19.2	123	—	19.2	24	40	8.7	62	—	8.7	15	15	29	25	28	225
599LWZ	ZF18K4E	21.5	156	—	21.5	27	45	8.3	70	—	8.3	15	15	29	25	28	230

Semi-Hermetic Low Temp (Water Cooled) Condensing Units

Model	Comp Model	Electrical Data											Physical Dimensions w/Housing				
		Amps @115/60/1						Amps @208-230/60/1					Length	Width	Height	Ship Wt. LBS.	
		Compressor		+ HCF Amps	Total CU	MCA	MOPD	Compressor		+ HCF Amps	Total CU	MCA					MOPD
RLA	LRA					RLA	LRA										
74LW	KWMB-007E	—	—	—	—	—	—	5.6	36.0	—	5.6	7.0	15	43	25-1/2	13 3/8	165
104LW	KWJB-010E	—	—	—	—	—	—	6.9	40.0	—	6.9	8.6	15	43	25-1/2	19 1/4	210
154LW	KWLB-015E	—	—	—	—	—	—	9.9	55.0	—	9.9	12.4	20	43	25-1/2	18 3/4	250
204LW	EAVB-021E	—	—	—	—	—	—	14.7	102.0	—	15.0	19.0	30	43	25-1/2	22 1/8	350
304LW	NRDA-040E	—	—	—	—	—	—	27.7*	115.0	0.9	28.6	35.8	60	43	25-1/2	40 1/4	460
344LW	—	—	—	—	—	—	—	—	—	—	—	—	—	43	25-1/2	38 1/4	540
444LW	—	—	—	—	—	—	—	—	—	—	—	—	—	43	25-1/2	38 1/4	550
644LW	—	—	—	—	—	—	—	—	—	—	—	—	—	47-1/8	25-1/2	40 3/8	690

Model	Comp Model	Electrical Data											Physical Dimensions w/Housing				
		Amps @208-230/60/3						Amps @460/60/3					Length	Width	Height	Ship Wt. LBS.	
		Compressor		+ HCF Amps	Total CU	MCA	MOPD	Compressor		Cond FLA	Total CU	MCA					MOPD
RLA	LRA					RLA	LRA										
74LW	KWMA-007E	3.2	19.9	—	3.2	4.0	15	—	—	—	—	—	—	43	25-1/2	13 3/8	165
104LW	KWJA-010E	4.6	27.0	—	4.6	5.8	15	2.1	15.0	—	2.1	2.6	15	43	25-1/2	19 1/4	210
154LW	KWLA-016E	6.6	50.0	—	6.6	8.3	15	3.4	25.0	—	3.4	4.3	15	43	25-1/2	18 3/4	250
204LW	EAVA-021E	7.4	50.0	0	7.7	9.9	15	3.9	26.6	0.2	4.1	5.4	15	43	25-1/2	22 1/8	350
304LW	NRD1-032E	16.3	82.0	0.9	17.2	21.5	35	8.4	41.0	0.4	8.8	11.2	15	43	25-1/2	40 1/4	460
344LW	2DF3F16KE	16.8	102.0	0.9	17.7	22.2	35	8.1	52.0	0.4	8.5	10.9	15	43	25-1/2	38 1/4	540
444LW	2DL3F20KE	26.3	161.0	0.9	27.2	34.0	50	10.2	60.0	0.4	10.6	13.5	20	43	25-1/2	38 1/4	550
644LW	3DA3F28KE	30.3	150.0	0.9	31.2	39.0	60	13.7	77.0	0.4	14.2	17.9	30	47-1/8	25-1/2	40 3/8	690

+ HFC Amps is amp draw for compressor head cooling fan.

Hermetic Low Temp (Water Cooled) Condensing Units												Physical Data					
Capacity (BTUH) @ 105°F AMBIENT												Condenser Water Conn		Sweat Connection		REC'R @90% LBS	Gals per Hour
Model	Norm HP	SUCTION TEMPERATURE										In	Out	ODS, IN.			
		-25	-20	-15	-10	-5	0F	10F	20F	25F	30F			SUC	LIQ		
69LW	3/4	2,090	2,610	3,160	3,750	4,360	5,020	—	—	—	—	1/2FPT	1/2FPT	5/8 OD	3/8 OD	6.5	24
99LW	1	3,490	4,110	4,790	5,530	6,340	7,240	—	—	—	—	1/2FPT	1/2FPT	5/8 OD	3/8 OD	5.4	48
149LW	1-1/2	5,020	6,250	7,620	9,090	10,700	12,300	—	—	—	—	1/2FPT	1/2FPT	7/8 OD	3/8 OD	5.4	48
199LW	2	7,360	9,110	11,000	13,200	15,400	17,800	—	—	—	—	1/2FPT	1/2FPT	7/8 OD	1/2 OD	16.6	66
299LW	3	10,500	12,800	15,200	17,700	20,500	23,400	—	—	—	—	1/2FPT	1/2FPT	7/8 OD	1/2 OD	16.6	144

Scroll Low Temp (Water Cooled) Condensing Units												Physical Data					
Capacity (BTUH) @ 105°F AMBIENT												Condenser Water Conn		Sweat Connection		REC'R @90% LBS	Gals per Hour
Model	Norm HP	SUCTION TEMPERATURE										In	Out	ODS, IN.			
		-25	-20	-15	-10	-5	0F	10F	20F	25F	30F			SUC	LIQ		
299LWZ	3	9,300	10,500	11,850	13,200	14,750	16,300	—	—	—	—	1/2FPT	1/2FPT	7/8 OD	1/2 OD	20	180
349LWZ	3-1/2	11,500	12,900	14,550	16,200	18,200	20,200	—	—	—	—	1/2FPT	1/2FPT	7/8 OD	1/2 OD	20	282
449LWZ	4-1/2	13,200	15,000	17,050	19,100	21,450	23,800	—	—	—	—	1/2FPT	1/2FPT	7/8 OD	1/2 OD	20	312
549LWZ	5-1/2	16,400	18,500	20,900	23,300	26,100	28,900	—	—	—	—	3/4FPT	3/4FPT	7/8 OD	1/2 OD	20	378
599LWZ	6	19,500	22,000	24,850	27,700	31,100	34,500	—	—	—	—	3/4FPT	3/4FPT	7/8 OD	1/2 OD	20	330

Scroll Low Temp (Water Cooled) Condensing Units												Physical Data					
Capacity (BTUH) @ 105°F AMBIENT												Condenser Water Conn		Sweat Connection		REC'R @90% LBS	Gals per Hour
Model	Norm HP	SUCTION TEMPERATURE										In	Out	ODS, IN.			
		-25	-20	-15	-10	-5	0F	10F	20F	25F	30F			SUC	LIQ		
74LW	3/4	2,720	3,250	3,830	4,460	5,130	5,860	—	—	—	—	3/8FPT	3/8FPT	5/8 OD	3/8 OD	5.4	33
104LW	1	3,980	4,660	5,420	6,250	7,170	8,180	—	—	—	—	1/2FPT	1/2FPT	5/8 OD	3/8 OD	12.5	45
154LW	1-1/2	5,920	6,900	7,960	9,130	10,410	11,800	—	—	—	—	1/2FPT	1/2FPT	7/8 OD	3/8 OD	15.6	66
204LW	2	7,810	9,170	10,700	12,300	14,100	16,100	—	—	—	—	1/2FPT	1/2FPT	7/8 OD	3/8 OD	21.1	87
304LW	3	14,200	16,700	19,500	22,500	25,700	29,200	—	—	—	—	1 FPT	1/2FPT	1-1/8 OD	1/2 OD	32.8	147
344LW	3	17,000	19,810	22,910	26,310	30,050	34,150	—	—	—	—	1 FPT	1/2FPT	1-1/8 OD	5/8 OD	78.4	190
444LW	4	20,700	24,020	27,660	31,640	36,000	40,760	—	—	—	—	1 FPT	1/2FPT	1-1/8 OD	5/8 OD	78.4	230
644LW	6	28,920	33,280	38,060	43,300	49,020	55,260	—	—	—	—	1 FPT	1 FPT	1-3/8 OD	5/8 OD	78.4	275

Hermetic Low Temp (Water Cooled) Condensing Units

Model	Comp Model	Electrical Data												Physical Dimensions w/Housing			
		Amps @115/60/1						Amps @208-230/60/1						Length	Width	Height	Ship Wt. LBS.
		Compressor		+ HCF	Total	MCA	MOPD	Compressor		+ HCF	Total	MCA	MOPD				
RLA	LRA	Amps	CU			RLA	LRA	Amps	CU								
49MW	49MW	10.5	54.5	—	10.5	13.1	20.0	5.3	26.5	—	5.3	6.6	15.0	33	25-1/2	13	50
69MW	69MW	15.0	15.0	—	15.0	18.8	30.0	6.8	70.0	—	6.8	8.5	15.0	33	25-1/2	14	151
99MW	99MW	—	—	—	—	—	—	7.7	37.0	—	7.7	9.6	15.0	33	25-1/2	19	156
149MW	149MW	—	—	—	—	—	—	12.4	56.0	—	10.9	13.6	20.0	33	25-1/2	17	163
199MW	199MW	—	—	—	—	—	—	10.9	56.0	—	10.9	13.6	20.0	33	25-1/2	17	211
249MW	249MW	—	—	—	—	—	—	12.4	61.0	—	12.4	15.5	25.0	33	25-1/2	17	213
299MW	299MW	—	—	—	—	—	—	16.0	82.0	—	16.0	20.0	35.0	33	25-1/2	17	216
349MW	349MW	—	—	—	—	—	—	18.6	96.0	—	18.6	23.3	40.0	33	25-1/2	18	260
399MW	399MW	—	—	—	—	—	—	23.9	121.0	—	23.9	29.9	50.0	33	25-1/2	23	400
499MW	499MW	—	—	—	—	—	—	30.7	125.0	—	30.7	38.4	60.0	33	25-1/2	23	400

Model	Comp Model	Electrical Data												Physical Dimensions w/Housing			
		Amps @208-230/60/3						Amps @460/60/3						Length	Width	Height	Ship Wt. LBS.
		Compressor		+ HCF	Total	MCA	MOPD	Compressor		Cond	Total	MCA	MOPD				
RLA	LRA	Amps	CU			FLA	CU										
149MW	149MW	8.1	51.0	—	7.5	9.4	15.0	3.6	25.0	—	3.6	4.5	15.0	33	25	17	163
199MW	199MW	8.6	51.0	—	9.4	9.4	15.0	—	—	—	—	—	—	33	25	17	211
249MW	249MW	9.1	55.0	—	9.1	11.4	20.0	4.7	28.0	—	4.7	5.9	15.0	33	25	17	213
299MW	299MW	10.4	65.5	—	10.4	13.0	20.0	4.7	33.0	—	4.7	5.9	15.0	33	25	17	216
349MW	349MW	11.4	75.0	—	11.4	14.3	25.0	5.1	40.0	—	5.1	6.4	15.0	33	25	18	260
399MW	399MW	15.6	105.0	—	15.6	19.5	35.0	7.7	52.0	—	7.7	9.6	15.0	33	25	23	400
499MW	499MW	18.7	102.0	—	18.7	23.4	40.0	—	—	—	—	—	—	33	25	23	400

Scroll Medium Temp (Water Cooled) Condensing Units

Model	Comp Model	Electrical Data												Physical Dimensions w/Housing			
		Amps @115/60/1						Amps @208-230/60/1						Length	Width	Height	Ship Wt. LBS.
		Compressor		+ HCF	Total	MCA	MOPD	Compressor		+ HCF	Total	MCA	MOPD				
RLA	LRA	Amps	CU			FLA	CU										
299MWZ	ZS21K4E	—	—	—	—	—	—	9.9	77	—	9.9	15.0	20.0	29	25	28	200
349MWZ	ZS26K4E	—	—	—	—	—	—	18.6	109	—	18.6	23.2	40.0	29	25	28	210
449MWZ	ZS30K4E	—	—	—	—	—	—	24.0	129	—	24.0	30.0	50.0	29	25	28	230
549MWZ	ZS38K4E	—	—	—	—	—	—	28.8	169	—	28.8	36.0	60.0	29	25	28	250
599MWZ	ZS45K4E	—	—	—	—	—	—	—	—	—	—	—	—	—	—	—	—

Model	Comp Model	Electrical Data												Physical Dimensions w/Housing			
		Amps @208-230/60/3						Amps @460/60/3						Length	Width	Height	Ship Wt. LBS.
		Compressor		+ HCF	Total	MCA	MOPD	Compressor		Cond	Total	MCA	MOPD				
RLA	LRA	Amps	CU			FLA	CU										
299MWZ	ZS21K4E	9.9	77	—	9.9	15	20	5.1	39	—	5.1	15.0	15.0	29	25	28	200
349MWZ	ZS26K4E	5.1	39	—	5.1	15	15	6.4	44	—	6.4	15.0	15.0	29	25	28	210
449MWZ	ZS30K4E	13.5	99	—	13.5	17	30	7.4	49.5	—	7.4	15.0	15.0	29	25	28	230
549MWZ	ZS38K4E	19.2	123	—	19.2	24	40	8.7	62	—	8.7	15.0	15.0	29	25	28	250
599MWZ	ZS45K4E	21.5	156	—	21.5	27	45	8.3	70	—	8.3	15.0	15.0	29	25	28	275

Semi-Hermetic Medium Temp (Water Cooled) Condensing Units

Model	Comp Model	Electrical Data												Physical Dimensions w/Housing			
		Amps @115/60/1						Amps @208-230/60/1						Length	Width	Height	Ship Wt. LBS.
		Compressor		+ HCF	Total	MCA	MOPD	Compressor		+ HCF	Total	MCA	MOPD				
RLA	LRA	Amps	CU			FLA	CU										
74MW	KWNB-007E	—	—	—	—	—	—	5.4	36.0	—	5.4	6.8	15.0	33	25-1/2	19-1/4	200
104MW	KWRB-010E	—	—	—	—	—	—	7.4	40.0	—	7.4	9.3	15.0	33	25-1/2	19-1/4	212
154MW	KWGB-010E	—	—	—	—	—	—	7.5	40.0	—	7.5	9.4	15.0	43	27-1/2	22-1/4	258
204MW	KWKB-021E	—	—	—	—	—	—	10.6	55.0	—	10.6	13.3	20.0	43	27-1/2	19-1/4	271
304MW	ERFB-031E	—	—	—	—	—	—	17.0	86.0	—	17.0	21.3	35.0	43	27-1/2	26	350

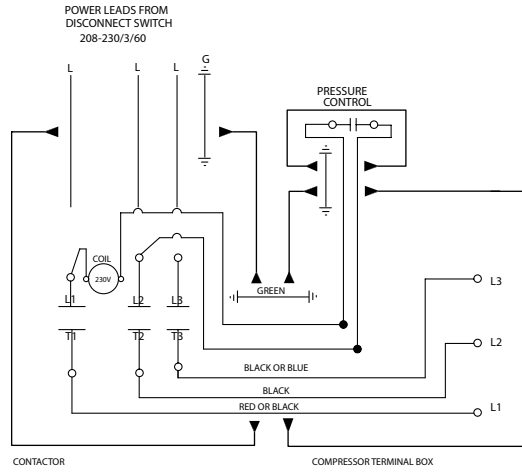
Model	Comp Model	Electrical Data												Physical Dimensions w/Housing			
		Amps @208-230/60/3						Amps @460/60/3						Length	Width	Height	Ship Wt. LBS.
		Compressor		+ HCF	Total	MCA	MOPD	Compressor		Cond	Total	MCA	MOPD				
RLA	LRA	Amps	CU			FLA	CU										
74MW	KWNA-007E	3.0	19.9	—	3.0	3.8	15.0	—	—	—	—	—	—	33	25-1/2	19-1/4	200
104MW	KWRA-010E	4.3	27.0	—	4.3	5.4	15.0	—	—	—	—	—	—	33	25-1/2	19-1/4	212
154MW	KAGA-010E	4.3	27.0	—	4.3	6.0	15.0	—	—	—	—	—	—	33	25-1/2	19-1/4	258
204MW	KWKA-020E	6.8	50.0	—	6.8	8.5	15.0	—	—	—	—	—	—	43	27-1/2	19-1/4	271
304MW	ERFA-031E	12.4	82.0	—	12.4	15.5	25.0	5.8	41.0	—	5.8	7.3	15.0	43	27-1/2	26	350

Hermetic Low Temp (Water Cooled) Condensing Units												Physical Data					
Capacity (BTUH) @ 105°F AMBIENT												Condenser Water Conn		Sweat Connection		REC'R @90% LBS	Gals per Hour
Model	Norm HP	SUCTION TEMPERATURE										In	Out	ODS, IN.			
		-15	-10	-5	0F	5F	10F	15F	20F	25F	30F			SUC	LIQ		
49MW	1/2	---	---	2,710	3,160	3,650	4,180	4,750	5,350	6,000	---	1/2" FPT	1/2" MPT	5/8 OD	3/8 OD	2.9	30
69MW	3/4	---	---	3,510	4,100	4,750	5,460	6,220	7,040	7,930	---	1/2" FPT	1/2" MPT	5/8 OD	3/8 OD	5.4	36
99MW	1	---	---	4,370	5,030	5,740	6,490	7,300	8,170	9,100	---	1/2" FPT	1/2" MPT	7/8 OD	3/8 OD	5.4	42
149MW	1-1/2	---	---	6,040	7,350	8,770	10,300	11,900	13,700	15,500	---	1/2" FPT	1/2" MPT	7/8 OD	3/8 OD	10.3	66
199MW	2	---	---	7,260	8,720	10,300	12,000	13,900	15,800	17,900	---	1/2" FPT	1/2" MPT	7/8 OD	7/8 OD	10.3	72
249MW	2-1/2	---	---	9,100	10,800	12,500	14,500	16,500	18,600	20,900	---	1/2" FPT	1/2" MPT	7/8 OD	7/8 OD	10.3	84
299MW	3	---	---	11,200	13,400	15,900	18,600	21,400	24,300	27,200	---	1/2" FPT	1/2" MPT	1-1/8 OD	3/8 OD	10.3	108
349MW	3-1/2	---	---	12,800	15,100	17,600	20,400	23,600	27,200	31,400	---	1/2" FPT	1/2" MPT	1-1/8 OD	3/8 OD	10.3	120
399MW	4	---	---	17,000	20,100	23,600	27,500	31,700	36,400	41,400	---	3/4" FPT	3/4" MPT	1-1/8 OD	1/2 OD	16.6	168
499MW	5	---	---	20,400	23,900	27,800	32,000	36,500	41,300	46,300	---	3/4" FPT	3/4" MPT	1-1/8 OD	1/2 OD	16.6	186

Hermetic Low Temp (Water Cooled) Condensing Units												Physical Data					
Capacity (BTUH) @ 105°F AMBIENT												Condenser Water Conn		Sweat Connection		REC'R @90% LBS	Gals per Hour
Model	Norm HP	SUCTION TEMPERATURE										In	Out	ODS, IN.			
		-30	-25	-20	-10	0F	10F	20F	25F	30F	40F			SUC	LIQ		
299MWZ	3	---	9,010	10,230	12,840	16,070	19,740	24,110	26,710	29,310	35,200	1/2" FPT	1/2" MPT	7/8 OD	1/2 OD	20	144
349MWZ	3-1/2	---	11,270	12,740	15,910	19,930	24,490	29,950	33,175	36,400	43,650	1/2" FPT	1/2" MPT	7/8 OD	1/2 OD	20	120
449MWZ	4-1/2	---	12,810	14,390	17,960	22,870	28,480	35,030	38,675	42,320	50,100	1/2" FPT	1/2" MPT	7/8 OD	1/2 OD	20	204
549MWZ	5-1/2	---	15,920	18,050	22,640	28,420	34,970	42,780	47,380	51,980	62,350	1/2" FPT	1/2" MPT	7/8 OD	1/2 OD	20	252
599MWZ	6	---	19,220	21,820	27,360	34,160	41,850	51,090	56,610	62,130	74,750	1/2" FPT	3/4" MPT	7/8 OD	1/2 OD	20	306

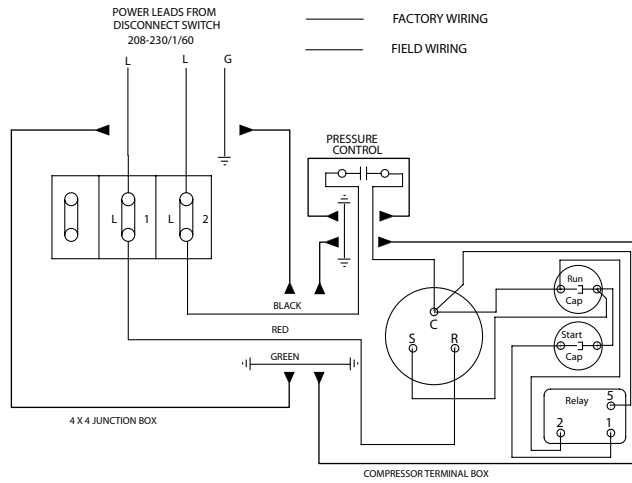
Hermetic Low Temp (Water Cooled) Condensing Units												Physical Data					
Capacity (BTUH) @ 105°F AMBIENT												Condenser Water Conn		Sweat Connection		REC'R @90% LBS	Gals per Hour
Model	Norm HP	SUCTION TEMPERATURE										In	Out	ODS, IN.			
		-15	-10	-5	0F	5F	10F	15F	20F	25F	40F			SUC	LIQ		
74MW	3/4	---	---	3,140	3,670	4,270	4,940	5,660	6,450	7,280	---	1/2" FPT	1/2" MPT	5/8 OD	3/8 OD	10.9	60
104MW	1	---	---	4,890	5,650	6,410	7,210	8,090	9,090	10,260	---	1/2" FPT	1/2" MPT	5/8 OD	3/8 OD	12.3	84
154MW	1-1/2	---	---	5,860	6,740	7,650	8,640	9,740	11,000	12,400	---	1/2" FPT	1/2" MPT	7/8 OD	3/8 OD	32.8	108
204MW	2	---	---	8,440	9,750	11,000	12,300	13,800	15,400	17,400	---	1/2" FPT	1/2" MPT	7/8 OD	3/8 OD	32.8	144
304MW	2	---	---	14,800	17,000	19,400	22,000	24,800	27,800	31,200	---	3/4" FPT	3/4" MPT	1-1/8 OD	1/2 OD	35.2	252

Wiring Diagram



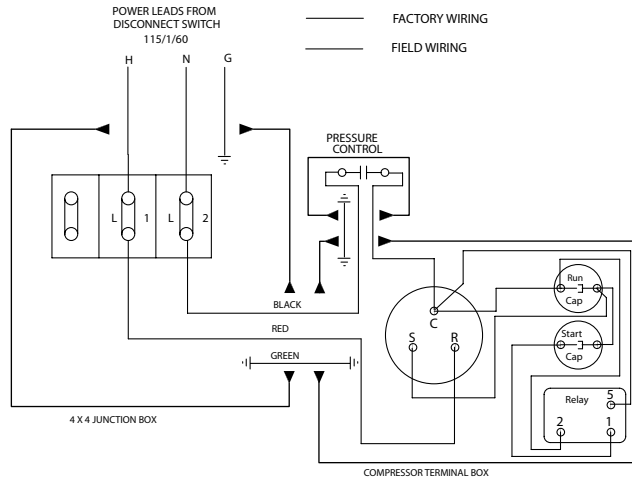
*Wiring Diagram
Condensing Unit
208/230/3/60*

TYPICAL WIRING DIAGRAM 208-20/3/60



*Wiring Diagram
Condensing Unit
208-230/1/60*

TYPICAL WIRING DIAGRAM 208-20/1/60

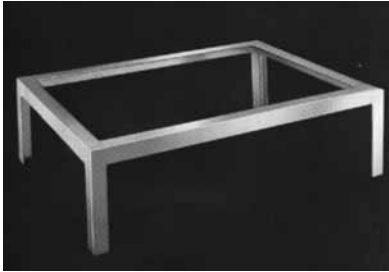


*Wiring Diagram
Condensing Unit
115/60/1*

TYPICAL WIRING DIAGRAM 115/1/60

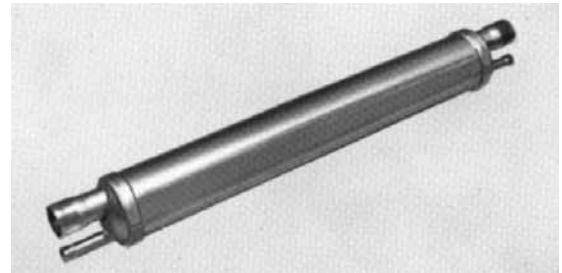
Refrigeration Systems

Accessories and Options



Condensing Unit Rack

This accessory is used to mount condensing unit assembly. Units can be installed separately, stacked or side-by-side. The racks are constructed of heavy-gauge angle iron, welded together and painted to resist rust.

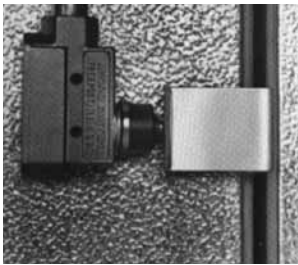


Heat Exchanger

A heat exchanger is a device to:

- Sub-cool the liquid refrigerant
- Reduce flash gas in the liquid line
- Reduce liquid refrigerant in the suction line

This accessory is factory installed on "PCL" systems. It is shipped loose for field installation of "PR" systems.



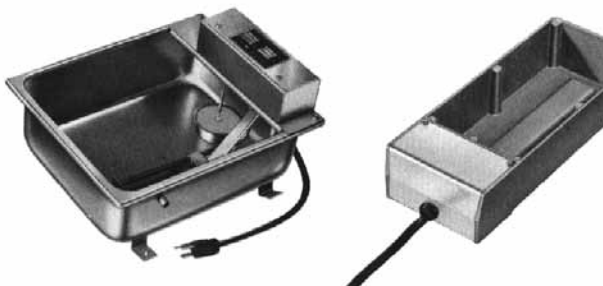
Fan Switch

This option shuts off fans and the compressor when door is opened and will automatically start system when door closes. (Refrigeration system requires pumpdown cycle.)



Drain Line Heater

This accessory is required on freezers to prevent drain line freeze-up. The heater is available in various lengths or can be provided in a variety of kit forms for field installation.



Condensate Evaporator

These units evaporate condensation formed by normal operation of the low-side assembly. It is normally used when a drain is not readily available. Two sizes are available, 50 oz. and 7-1/2 quart capacity, each with a heating element of 120-volts and built-in thermostat



Accumulator



Disconnect Switch



Oil Separator



KOLPAK

2915 TENNESSEE AVE NORTH, PARSONS, TN 38363 • 1-877-759-9019 • FAX 1-731-847-9012



SOLUTIONS

Kolpak provides many of the operational solutions from Manitowoc Foodservice, a global company dedicated to bringing value to foodservice operators by equipping them with highly individualized real-world answers that enhance menus, service, profits and efficiency.

To learn how Manitowoc Foodservice and its leading brands can equip you, visit our global web site at www.manitowocfoodservice.com then find the regional or local resources available to you.

